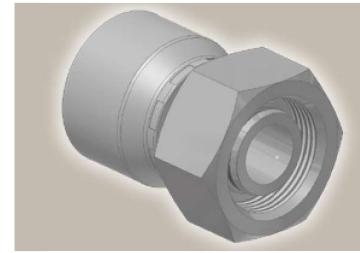
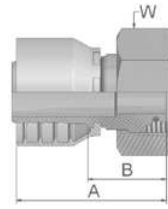


C9 Female Metric 24° – Swivel Heavy Series with O-Ring Straight

ISO 12151-2-SWS-S – DKOS



| Part Number | | Hose I.D. | | | | Thread | Tube | A | B | W |
|-------------|-------------|-----------|-------|------|------|---------|---------|----|----|----|
| 46 series | 48 series | DN | Inch | Size | mm | metric | O.D. mm | mm | mm | mm |
| 1C946-6-4 | | 6 | 1/4 | -4 | 6.4 | M14x1.5 | 6 | 48 | 26 | 17 |
| | 1C948-6-4 | 6 | 1/4 | -4 | 6.4 | M14x1.5 | 6 | 49 | 26 | 17 |
| 1C946-8-4 | 1C948-8-4 | 6 | 1/4 | -4 | 6.4 | M16x1.5 | 8 | 47 | 23 | 19 |
| 1C946-10-4 | 1C948-10-4 | 6 | 1/4 | -4 | 6.4 | M18x1.5 | 10 | 46 | 22 | 22 |
| 1C946-12-4 | 1C948-12-4 | 6 | 1/4 | -4 | 6.4 | M20x1.5 | 12 | 47 | 24 | 24 |
| 1C946-14-4 | 1C948-14-4 | 6 | 1/4 | -4 | 6.4 | M22x1.5 | 14 | 48 | 24 | 27 |
| 1C946-8-5 | 1C948-8-5 | 8 | 5/16 | -5 | 7.9 | M16x1.5 | 8 | 46 | 23 | 19 |
| 1C946-10-5 | 1C948-10-5 | 8 | 5/16 | -5 | 7.9 | M18x1.5 | 10 | 46 | 22 | 22 |
| 1C946-12-5 | 1C948-12-5 | 8 | 5/16 | -5 | 7.9 | M20x1.5 | 12 | 48 | 24 | 24 |
| 1C946-14-5 | 1C948-14-5 | 8 | 5/16 | -5 | 7.9 | M22x1.5 | 14 | 48 | 24 | 27 |
| 1C946-16-5 | 1C948-16-5 | 8 | 5/16 | -5 | 7.9 | M24x1.5 | 16 | 52 | 28 | 30 |
| 1C946-8-6 | 1C948-8-6 | 10 | 3/8 | -6 | 9.5 | M16x1.5 | 8 | 49 | 26 | 19 |
| 1C946-10-6 | 1C948-10-6 | 10 | 3/8 | -6 | 9.5 | M18x1.5 | 10 | 45 | 22 | 22 |
| 1C946-12-6 | 1C948-12-6 | 10 | 3/8 | -6 | 9.5 | M20x1.5 | 12 | 47 | 24 | 24 |
| 1C946-14-6 | 1C948-14-6 | 10 | 3/8 | -6 | 9.5 | M22x1.5 | 14 | 47 | 24 | 27 |
| 1C946-16-6 | 1C948-16-6 | 10 | 3/8 | -6 | 9.5 | M24x1.5 | 16 | 50 | 28 | 30 |
| 1C946-12-8 | 1C948-12-8 | 12 | 1/2 | -8 | 12.7 | M20x1.5 | 12 | 51 | 28 | 24 |
| 1C946-14-8 | 1C948-14-8 | 12 | 1/2 | -8 | 12.7 | M22x1.5 | 14 | 48 | 24 | 27 |
| 1C946-16-8 | 1C948-16-8 | 12 | 1/2 | -8 | 12.7 | M24x1.5 | 16 | 51 | 28 | 30 |
| 1C946-20-8 | 1C948-20-8 | 12 | 1/2 | -8 | 12.7 | M30x2 | 20 | 53 | 29 | 36 |
| 1C946-16-10 | 1C948-16-10 | 16 | 5/8 | -10 | 15.9 | M24x1.5 | 16 | 53 | 28 | 30 |
| 1C946-20-10 | 1C948-20-10 | 16 | 5/8 | -10 | 15.9 | M30x2 | 20 | 53 | 28 | 36 |
| | 1C948-12-12 | 19 | 3/4 | -12 | 19.1 | M20x1.5 | 12 | 53 | 28 | 24 |
| | 1C948-16-12 | 19 | 3/4 | -12 | 19.1 | M24x1.5 | 16 | 55 | 29 | 30 |
| 1C946-20-12 | 1C948-20-12 | 19 | 3/4 | -12 | 19.1 | M30x2 | 20 | 56 | 30 | 36 |
| 1C946-25-12 | 1C948-25-12 | 19 | 3/4 | -12 | 19.1 | M36x2 | 25 | 61 | 35 | 46 |
| 1C946-25-16 | 1C948-25-16 | 25 | 1 | -16 | 25.4 | M36x2 | 25 | 63 | 33 | 46 |
| 1C946-30-16 | 1C948-30-16 | 25 | 1 | -16 | 25.4 | M42x2 | 30 | 67 | 38 | 50 |
| | 1C948-25-20 | 31 | 1 1/4 | -20 | 31.8 | M36x2 | 25 | 81 | 34 | 46 |
| 1C946-38-20 | | 31 | 1 1/4 | -20 | 31.8 | M52x2 | 38 | 74 | 36 | 60 |
| | 1C948-38-20 | 31 | 1 1/4 | -20 | 31.8 | M52x2 | 38 | 80 | 33 | 60 |

46/48 Series

Hose fittings are delivered with ozone resistant Nitrile (NBR) O-ring as a standard version. Working temperature from -40 °C up to +105 °C. Hose fittings with special O-rings (Viton or EPDM) available on request. O-ring dimensions and part-numbers see in section Eb.

Approved **fitting series** for hose types, depending on size: Also available in stainless steel. Details can be found in CAT 4400.1/UK

| | | | | | | | | | | | | | | | | | |
|------------------------|-------|-------|-------|-------|-------|---------|------------|-------|-------|-----|-------|-------|------------|-------|-------|-----|-----|
| 46 or 48 | 441 | 461LT | 462 | 462TC | 462ST | 629PU | 692PU Twin | | | | | | | | | | |
| 46 | 463 | 492 | 492ST | 492TC | 692 | 692Twin | 692TC | BCH1 | | | | | | | | | |
| 48 | 301SN | 304 | 387 | 387ST | 387TC | 421RH | 421SN | 426 | 421TC | 436 | 441RH | 462PU | 462PU Twin | BCH2 | HT2 | ... | |
| | 471TC | 477 | 477ST | 477TC | 477RH | 487 | 487ST | 487TC | 493 | 787 | 787TC | 787ST | 797 | 797TC | 797ST | 811 | 881 |